

Canterbury COVID-19 Vaccination Programme Overview and Disability Focus

At 25 May 2021

Canterbury

District Health Board

Te Poari Hauora ō Waitaha

Messages from the Ministry

Our plan starts with those most at risk of catching COVID-19, or most at risk if they do get it.

Everyone over the age of 16 in Aotearoa will be able to be vaccinated and the vaccination is free.

Please be patient; everyone will have an opportunity to be vaccinated by the end of the year.

Canterbury

District Health Board

Te Poari Hauora ō Waitaha

Roll out plan

Group 2b NOW and ongoing.....

- At risk people living in settings with high risk of transmission or exposure to COVID-19 (long term residential care settings)
- Maori and Pacific older people (and their households and carers) living within a whanau environment

Group 3 mid-year and ongoing.....

- People aged 65 years and over
- People who are 16-65 years, disabled, with severe mental illness, pregnant or living with underlying health conditions

Group 4 to be later....

- General population 16 – 65 years

Canterbury

District Health Board

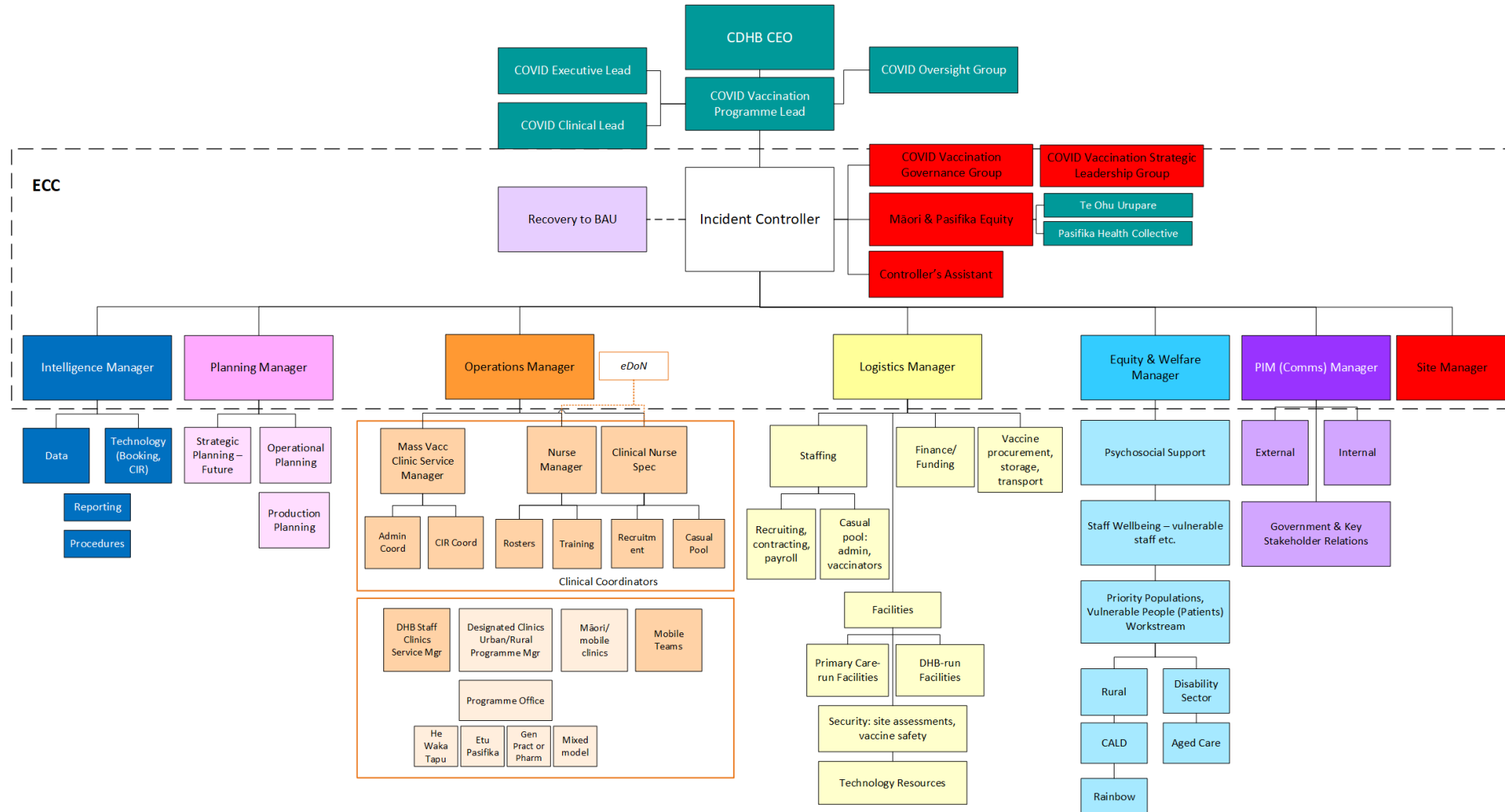
Te Poari Hauora ō Waitaha

Canterbury COVID-19 Vaccination Programme

– as at 25 May 2021

COVID-19 Vaccination Programme Roll-Out EMERGENCY COORDINATION CENTRE (ECC)

May 2021



Disability plan

Ministry of Health has developed a plan for the Vaccine and Immunisation Programme, focusing on disabled people, their families/whanau, and those who provide services.

Developed with input from disabled people and disability services.

This Plan is being implemented at each DHB, tailored to their situation.

There are specific Canterbury DHB roles being created to ensure it works for everyone.

Tom Callanan on Strategic Leadership Group.

Canterbury

District Health Board

Te Poari Hauora ō Waitaha

Disability plan

Individual situations will be considered to contact them and schedule a vaccination time and place

- 1) People funded by DSS – provider involvement.
- 2) People associated with an NGO provider – eg Deaf Aotearoa, Blind Low Vision NZ – CDHB will make suitable arrangements to be determined.
- 3) Disabled people not affiliated have options explained below, including going to a participating general practice or community pharmacy.

Vaccination Locations

In Canterbury, these are the details at the moment.

Canterbury

District Health Board

Te Poari Hauora ō Waitaha

Current and Planned Access Points

Mass Vaccination Centres

Orchard Road Operational

Maori and Pasifika Older People and Whānau

Mobile Maori provision at marae from 28 May
Etu Pasifika from beg June
He Waka Tapu from 7 June

Outreach Mobile Service

First team operational from 5 May
Second team operational from 25 May
Chatham Islands service from end June

Primary and Community Designated Clinics

Barrington	Operational
Ashburton	Operational
Wigram	Operational
Riccarton	Operational
Kaikoura	Operational
<i>Planned</i>	
Amberley	25 May
Akaroa	26 May
Rolleston	3 June
Rangiora x 2	9-10 June
Amuri	14 June
Cheviot	14 June
Waikari	14 June
Hanmer	14 June
Methven	15 June
Darfield	17 June
Lincoln	22 June

Vaccination Locations

More will be coming on stream, in all categories, including general practices

Canterbury

District Health Board

Te Poari Hauora ō Waitaha

What about disabled people?

Enabling Good Lives principles

Mainstream first

Nothing about us without us

Choice and control

Canterbury

District Health Board

Te Poari Hauora ō Waitaha

Options for disabled people

Mass Vaccination Centres

Accessibility – details online

GP Practices

Familiar location, but not all will offer

Outreach Mobile Service

Will go to residential services
Other locations by arrangement, to be determined

Tailored accommodations to be determined

Might include:

Low sensory options

Quiet spaces

Longer appointments

Families and carers at the same time

Information will be key – being developed

- Speak and listen - ongoing
- What to expect
- Alternative formats – available from MoH
- Supported decision making – resources available from MoH
- Staff training – disability awareness